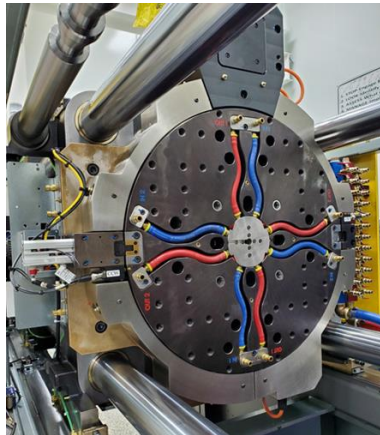


LIMITLESS SOLUTIONS, SINGLE SOURCE



Statistics / FAQs

- Developed First Machine Solution in 1998
- All Products are Designed, Built to Order, and Assembled in Germantown, WI
- Over 2000 Products Deployed – Worldwide Install Base

Why Retrofit Solution vs OEM Solution?

- Ability to Easily Configure to New or Existing IMM Assets
- Faster Leadtime using Existing OEM Machines
- Industries' most Flexible and Reliable Product offering

Why MGS vs Competitor Offerings?

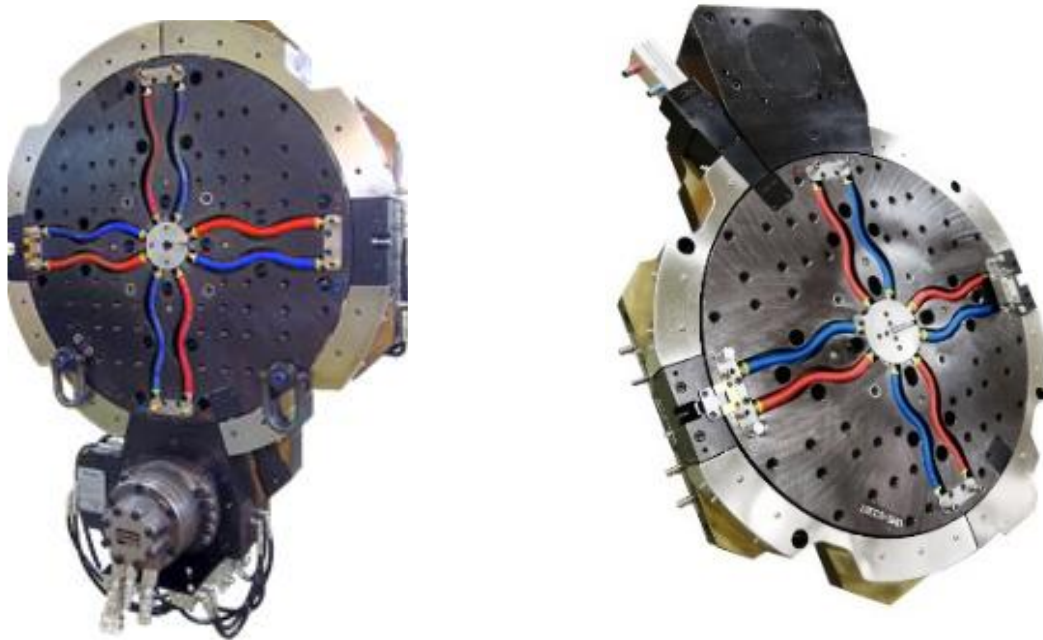
- Complete Solution – Industries' Largest Product Offering & Available Sizes
- Better Performance is Standard – Low Maintenance, High Uptime
- Customizability – Each Solution Built to Order; per Application
- Answer Challenges with Unconventional Solutions
- Turnkey & Integration Capability

Rotary Platen

Features & Specifications

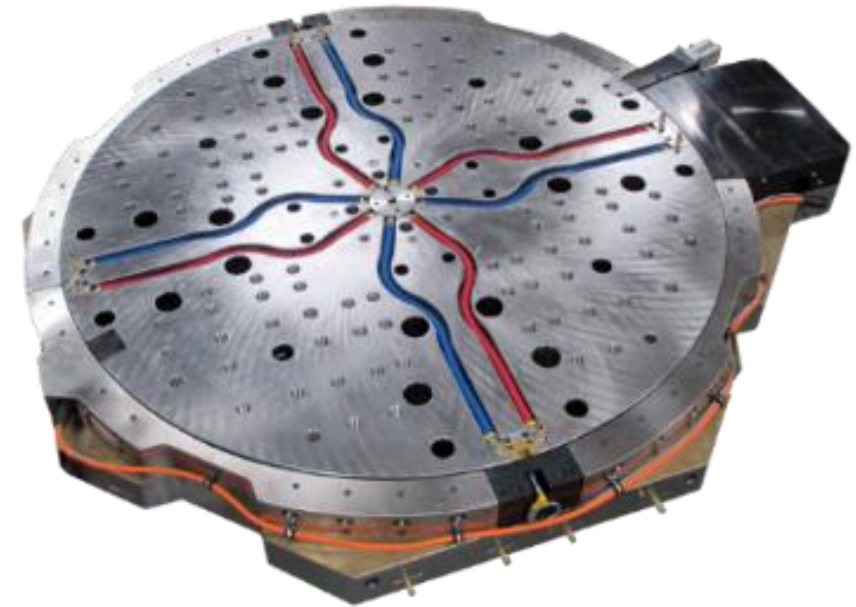
Small – Medium / 150 – 750 ton IMM

650mm, 750mm, 850mm, 975mm, 1100mm, 1250mm,
1340mm, 1400mm



Large / 800 – 4000 ton IMM

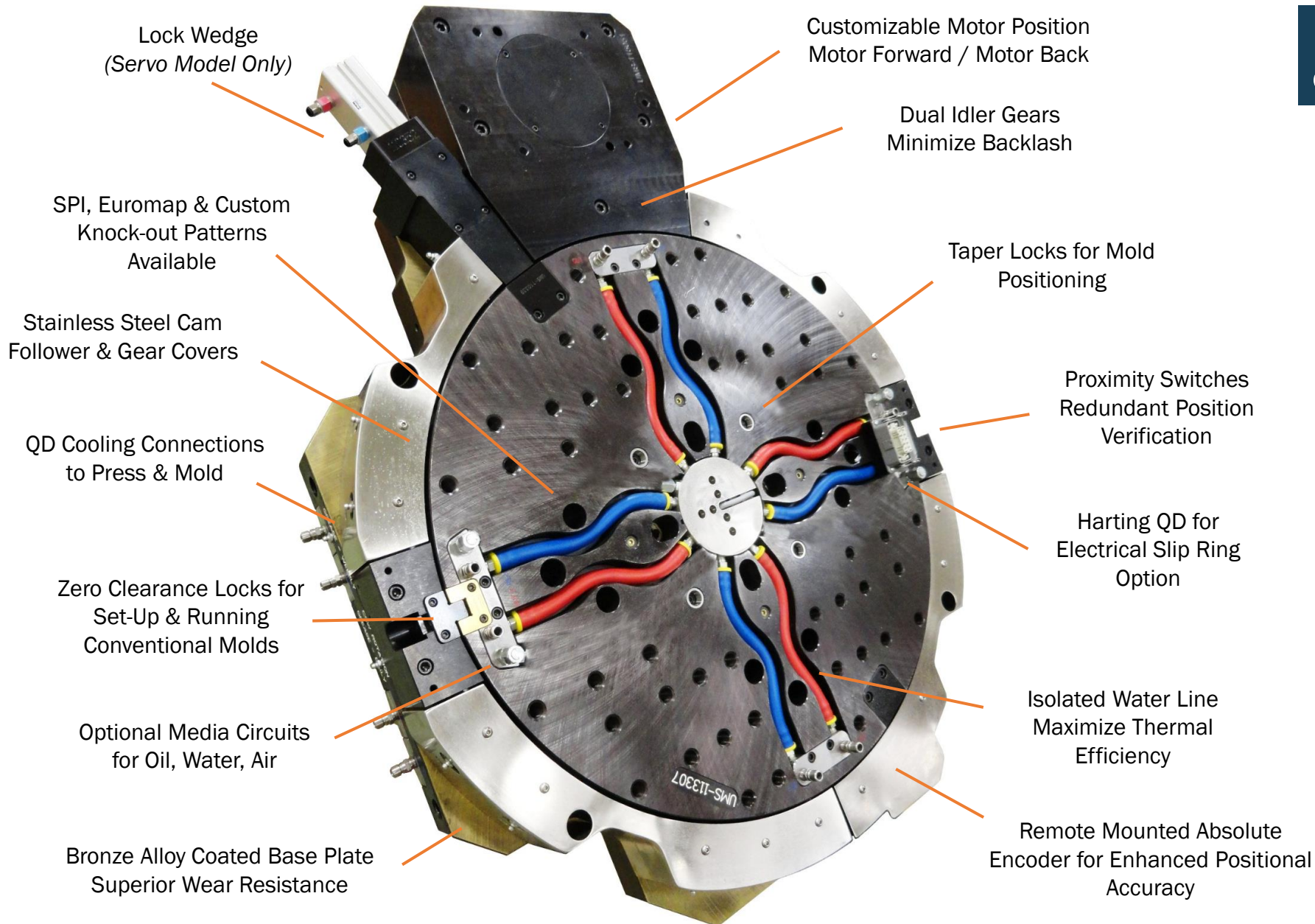
1500mm, 1600mm, 1800mm, 2200mm 2550mm,
2700mm, 2850mm



Hydraulic or Servo ... PERFORMANCE by design

- ✓ Heavy Load Capacity
- ✓ Easy Integration
- ✓ Option Media Circuits
- ✓ Configurable Drive Train Location
- ✓ Independent or Integrated Control
- ✓ Lock Wedge Position Holding– (Servo Systems)
- ✓ Electrical Slip Ring
- ✓ Custom Products

Rotary Platen Features



Integrated with MGS IU System
or as Standalone Motion Control



Water Union

CNC Lathe Machining
Stainless Steel Housing & Shaft



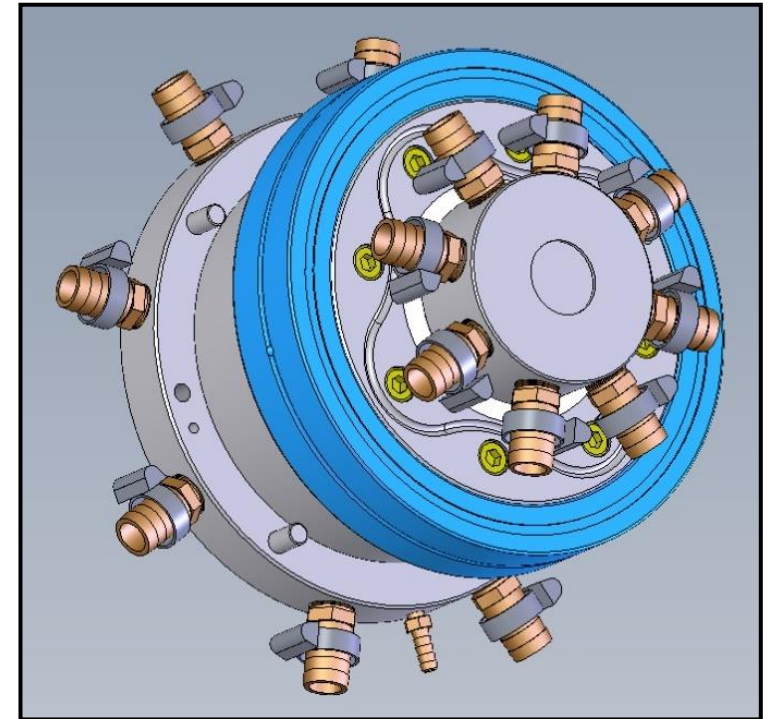
Shaft Bearings

Bearing design isolates load;
extending seal life extending
IMM uptime



Main Bearing

Surrounds Union Housing to maintain
centerline concentricity of assembly
from IMM to Mold



Lock Wedge

Pneumatically sequenced maintaining disc position during clamp movement



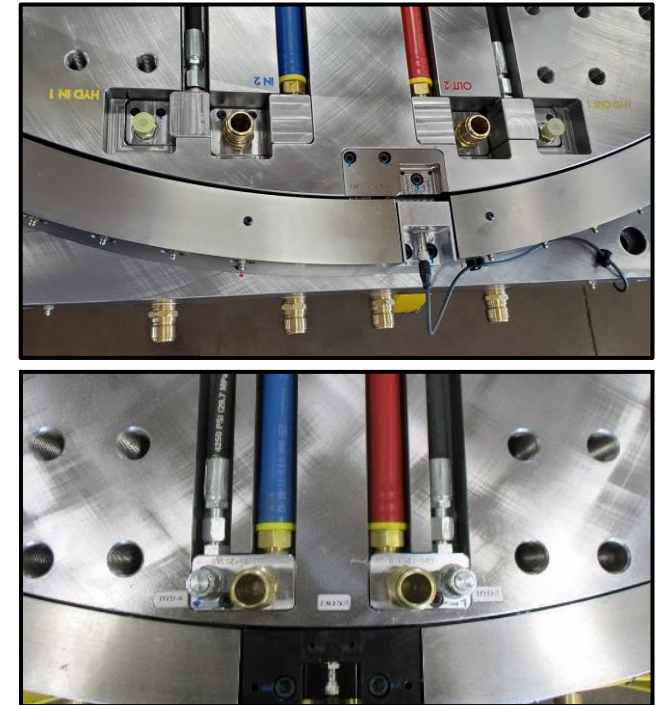
CAM Followers

Designed to Secure disk to the baseplate & provide lubrication gap
Engineered safety factor for clamp open force plus load



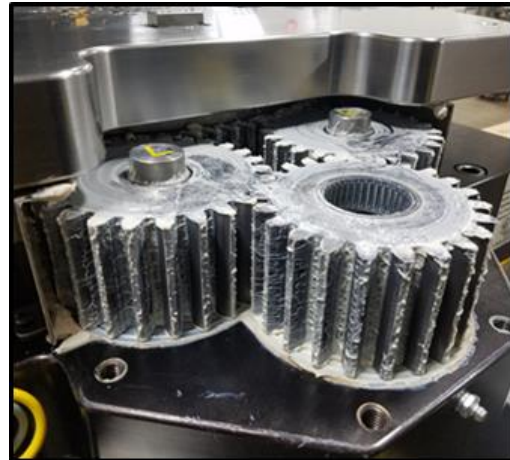
Media Blocks

Water / Air / Oil - Configured to meet application criteria



Gear Drivetrain

Designed for robust use, close positional tolerance



Rotary Platen - Specifications



Model	Ø Size (mm)	Minimum Tie Bar Clearance		Minimum Free Space Diameter		# Water Circuits & Diameter			Shut Height		Oil Media Diameter	Oil Circuits	Rotary Platen Weight		Max Mold Weight	
		(in)	(cm)	(in)	(cm)	(Qty)	(in)	(cm)	(in)	(mm)			(lbs)	(kg)	(lbs)	(kg)
RP650	650	20.08 x 20.08	51.00 x 51.00	29.3	74.4	4	Ø 0.34	Ø 0.86	5.9	150	D03 Ø .28in 7mm	2	1,200	545	1,114	506
RP750	750	22.05 x 22.05	56.01 x 56.01	33.2	84.3								1,540	700	1,710	777
RP850	850	25.00 x 25.00	63.50 x 63.50	36.9	93.7								2,150	977	2,490	1,132
RP975	975	28.75 x 28.75	73.03 x 73.03	41.6	105.7								2,570	1,168	3,760	1,709
RP1100	1100	31.90 x 31.90	81.03 x 81.03	46.9	119.1								5,300	2,409	5,395	2,452
RP1250	1250	34.64 x 34.64	88.00 x 88.00	52.4	133.1								5,950	2,705	7,920	3,600
RP1340	1340	39.37 x 39.37	100.0 x 100.0	55.5	141.0								6,900	3,136	9,760	4,436
RP1400	1400	39.90 x 39.90	101.3 x 101.3	58.7	149.1								7,300	3,318	11,130	5,059
Model	Ø Size (mm)	Minimum Tie Bar Clearance		Minimum Free Space Diameter		(Qty)	(in)	(cm)	(in)	(mm)	Oil Media Diameter	Oil Circuits	Rotary Platen Weight		Max Mold Weight	
		(in)	(cm)	(in)	(cm)								(lbs)	(kg)	(lbs)	(kg)
RP1500	1500	42.90 x 42.90	108.9 x 108.9	63.4	161.0	4	Ø 0.72	Ø 1.83	9.0	230	D05 Ø .41in 10.4mm	2	8,285	3,766	13,680	6,218
RP1600	1600	44.90 x 44.90	114.0 x 114.0	66.5	168.9								9,225	4,193	16,600	7,545
RP1800	1800	51.00 x 51.00	129.5 x 129.5	74.8	190.0								11,600	5,273	23,640	10,745
RP2000	2000	56.00 x 56.00	142.2 x 142.2	84.2	213.9								14,200	6,455	32,425	14,739
RP2200	2200	63.00 x 63.00	160.0 x 160.0	94.0	238.8								16,920	7,691	40,000	18,182
RP2550	2550	70.00 x 70.00	177.8 x 177.8	106.4	270.3								22,560	10,255	45,000	20,455
RP2700	2700	75.00 x 75.00	190.5 x 190.5	112.6	286.0								24,700	11,227	50,000	22,727
RP2850	2850	80.00 x 80.00	203.2 x 203.2	120.4	305.8								28,180	12,809	55,000	25,000

| Thank you for your time!



**Please visit us in Germantown, WI.
We'd love to host you for a personal tour.**